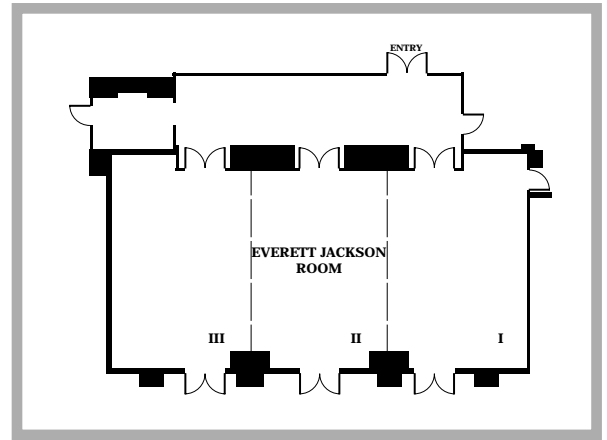
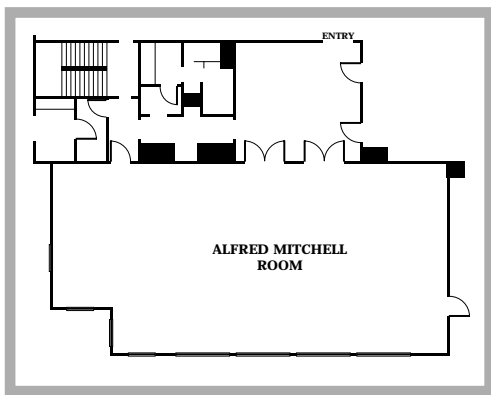


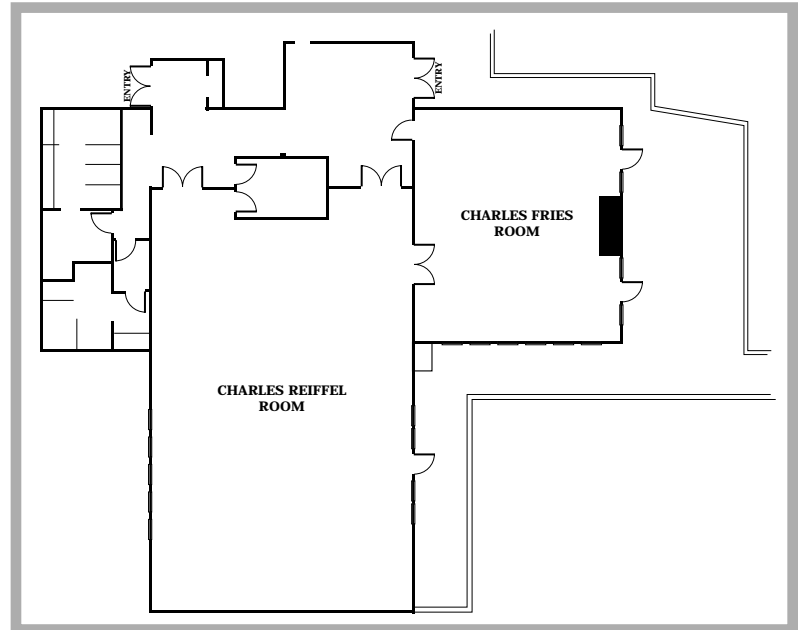
MAURICE BRAUN BALLROOM



EVERETT JACKSON ROOM



ALFRED MITCHELL ROOM



CHARLES REIFFEL ROOM  
CHARLES FRIES ROOM

| ROOM                   | SIZE  | SQUARE FOOTAGE | CEILING | RECEPTION | BANQUET | THEATRE | CLASSROOM | SQUARE | CONF. | BANQUET w/<br>DANCE FLOOR |
|------------------------|-------|----------------|---------|-----------|---------|---------|-----------|--------|-------|---------------------------|
| Maurice Braun Ballroom | 42x77 | 3,250          | 11'-15' | 469       | 270     | 400     | 162       |        |       | 240                       |
| "I"                    | 25x42 | 1,050          | 11'-15' | 154       | 60      | 130     | 48        |        | 32    |                           |
| "II"                   | 26x42 | 1,100          | 11'-15' | 156       | 60      | 130     | 48        |        | 32    |                           |
| "III"                  | 26x42 | 1,100          | 11'-15' | 156       | 60      | 130     | 48        |        | 32    |                           |
| Charles Reiffel        | 40x55 | 2,450          | 11'     | 351       | 200     | 260     | 144       | 52     | 46    | 150                       |
| Charles Fries          | 30x36 | 1,100          | 8'-10'  | 151       | 90      | 120     | 60        | 36     | 28    |                           |
| Alfred Mitchell        | 33x67 | 2,200          | 13'     | 211       | 160     | 160     | 108       | 50     | 44    | 130                       |
| Everett Jackson        | 63x32 | 1,950          | 12'6"   | 135       | 135     | 135     | 135       |        |       | 120                       |
| "I"                    | 21x32 | 650            | 12'6"   | 45        | 45      | 45      | 36        | 36     | 28    |                           |
| "II"                   | 21x32 | 650            | 12'6"   | 45        | 45      | 45      | 36        | 36     | 28    |                           |
| "III"                  | 21x32 | 650            | 12'6"   | 45        | 45      | 45      | 36        | 36     | 28    |                           |