

Omni La Mansión del Rio Specifications & Floor Plans

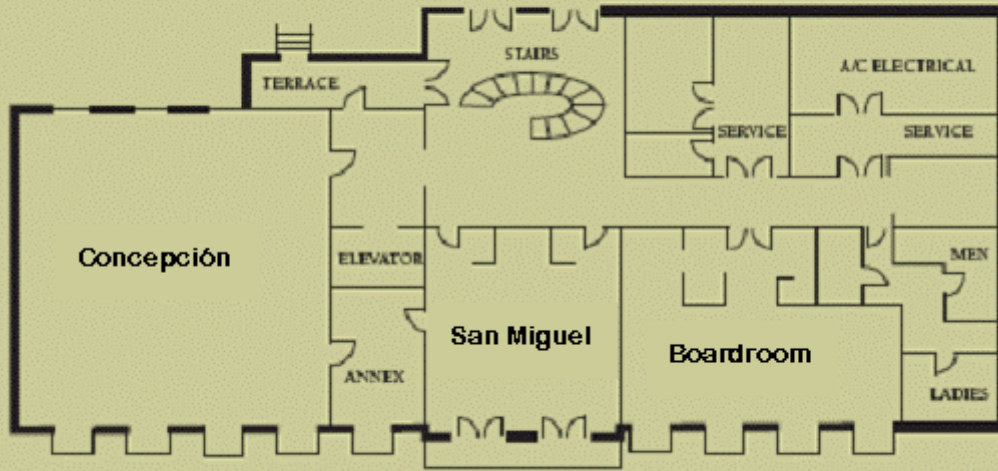
Meeting Room Chart

OMNI LA MANSION DEL RIO													
FLOOR	ROOM	CEILING	DIMENSIONS	CONF.	U-SHAPE	HOLLOW SQUARE	CLASSROOM	THEATRE STYLE	ROUNDS	ROUNDS HEAD TABLE	ROUNDS W/ BUFFET	ROUNDS DANCE FLOOR	CRESENT ROUNDS OF 7
(LEVEL)		Height	(SQ. FT)				4 per 8 ft		(of 10)				
2	SAN MIGUEL	7.8"	21.3x20.9=445.17	18 Diag.	18	20	24	34	30	20	20	-	14
3	LOS HIDALGOS	7.7"	21.3x20.9=445.17	18 Diag.	18	20	24	34	30	20	20	-	14
2	CONCEPCION	8"/ 9.2"	36.5x36.5=1332.25	30	36	40	66	130	90	80	70	50	56
3	ESPADA	8"/ 9.2"	36x36=1296	30	36	40	66	130	90	80	70	50	56
3	SAN JOSE	7.8"	27.7x19.3=523.03	24	20	24	32	50	40	30	30	-	21
3	EL CONDE	7.9"	18.2x11.5=209.3	12	-	-	8	16	10	-	-	-	-
3	LA CONDESA	7.9"	13.8x11.5=158.7	10 Rounds	-	-	8	10	10	-	-	-	-
3	CONDE/CONDESA	7.9"	31.10x11.5=357.65	20	-	-	16	35	30	20	20	-	14
2	BOARDROOM	8.11"	33x13=429	16	-	-	-	-	-	-	-	-	-
5	IBERIAN	11"/ 13.6"	91x43=3913	90	70	88	215	500	300	250	280	250	175
5	IBERIAN AB	11"/ 13.6"	58x43=2494	45	54	70	120	280	210	170	170	120	120
5	IBERIAN BC	11"/ 13.6"	59x43=2537	40	54	70	120	280	210	170	170	120	120
5	IBERIAN A	11"/ 7.8"	31x43=1333	30	40	50	60	140	90	70	70	-	48
5	IBERIAN B	11"/ 13.6"	27x43=1161	30	40	50	48	90	60	50	50	-	35
5	IBERIAN C	11"/ 13.6"	33x43=1419	30	40	50	68	125	90	70	70	-	48
5	MADERO	11"/ 13.6"	58.3x41.6=2425.28	54	45	58	112	190	190	140	160	120	112
5	MADERO A	11"/ 13.6"	25x39=975	30	30	36	32	70	60	40	50	-	35
5	MADERO B	11"/ 13.6"	33x42=1386	30	30	40	60	96	80	60	60	-	42
4	VERAMENDI	8.8"	27x50=1350	30	40	46	90	150	150	100	120	100	70
1	EL COLEGIO	9.8"	21x44=924	26	-	-	24	40	50	40	50	-	-
1	EL CAPISTRANO	9"	68x26=1522	24	26	28	30	40	60	-	60	-	28
1	COURTYARD	8.2"	46x55.4=1822	-	-	-	-	90	40	-	-	-	-

Floor Plan Diagrams



Second Level



Third Level

